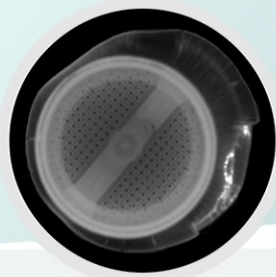
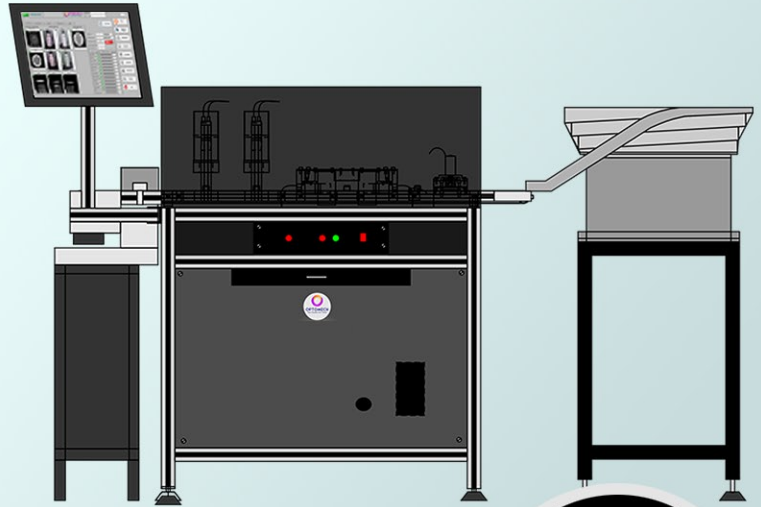




**OPTOMECH**  
Your Quality Our Vision

# Silica Desiccant Canister Inspection System



Optomech engineers supplies advanced online automatic vision inspection solution's for the plastic manufacturing, pharma and the FMCG industries

Optomech offers standard inspection machines for Empty Bottles, filled bottles, Closures and Label Inspection.

Apart from these, Optomech has the capabilities to design, develop, manufacture and install custom inspection solutions as per the customer requirements.

## Salient features

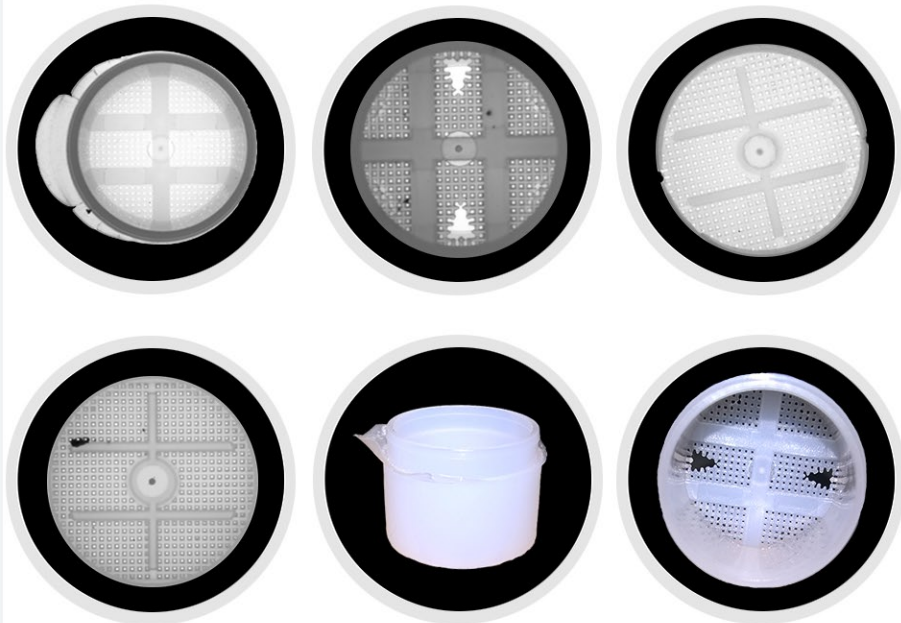
- Easy to use touch screen user interface.
- All settings related to a product are stored in a database, any number of different products (closures) can be Configured directly by the user and saved.
- Product changer over is a simple process of just selecting the product form a list and loading.
- The Software complies with the USFDA- Code of Federal Regulations(CFR)ital 11 chapter 21
- All inspections results are stored in the database with a time stamp, detailed reports can be generated and exported to excel at any time.
- The system automatically generates reports every hour, these can be viewed remotely.
- Each product image is displayed on the screen as the product is inspected.
- Frequency of each defect occurrence is displayed on screen.
- Password protected multilevel, user access control is provided.
- Easy to define tolerances allows the user to decide, which product passes and which needs to be rejected.
- Defective products are ejected from the line.

## Silica Desiccant Canister Inspection System – CANIS

The CANIS is a high speed fully automatic inspection system for the all-round inspection of Silica gel Canisters.

### Each canister is inspected for the following:

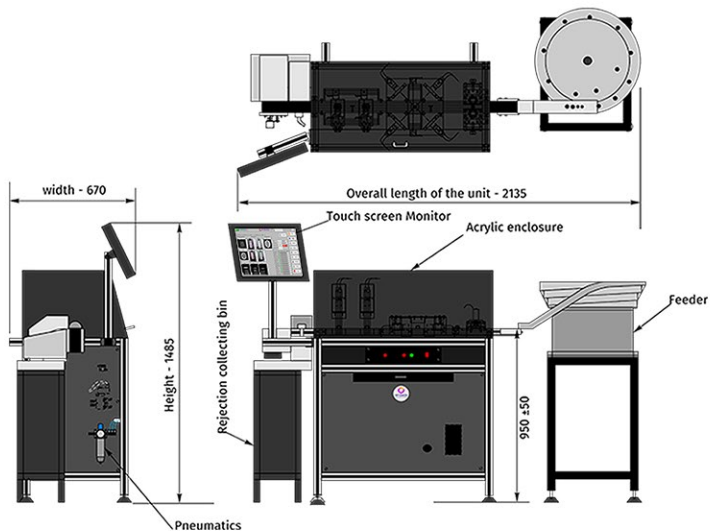
- Incomplete blowing or plastic part shape variation.
- Height variation.
- Short moulding.
- Flashes, extra material.
- Under/short moulding, Nicks, Dents.
- Ovality, Diameter variation's.
- Black Spots on the outer surface.
- Mesh defect- Broken Mesh, Blocked Holes.
- Grease inside (blocking the hole).
- Large Hair inside the cap.



- Canisters are inspected at the speed of up to 300 cans/caps per minute.
- This is a stand-alone machine, consisting of feeder, conveyor, cameras and control systems, and ejection unit.
- The whole machine is in a case in an ergonomically designed enclosure. Which also provides shielding from external light.

# Specifications:

MODEL	: Optomech - CANIS		
SPEED	: Up to max 250-300 Caps/min.		
Plastic part size	Description	Diameter	Height
	1) Small Cap	14	5
	2) Small Body	14	17
	3) Big Cap	20	5
	4) Big Body	20	14.7
<b>MIN GAP BETWEEN CANISTERS/CAPS : 25MM</b>			
ACCURACY	0.1 mm For plastic part height of 20 mm.		
DEFECTS DETECTED:	Flashes; Short molding; Diameter, Ovality variation		
	Canister base: Mesh Defect, broken Mesh, blocked holes		
MACHINE SIZE :	Length : 1850mm	Width:850mm	Height:1670mm
	Weight: 150 Kg		
CONVEYOR :	Main conveyor : Belt Width : 60 mm	Length: 1850mm	
	Belt Speed: Upto 30 m/min		
UTILITIES:	Electric: Voltage and Current: Ac 415 v 3 phase, 5A.		
	Compressed Air : 6-10 Bar, oil free clean air, Push in connection 6mm.		
OPERATING CONDITIONS :	Temperature : +10 °C to +40°C		
	Humidity : 40% -90% RH, non-condensing.		
	Maximum operating altitude: 1900 m		



## About Optomech

Optomech Engineers Pvt. Ltd. was founded in Hyderabad, India in the year 1981.

Optomech has over 30 years of experience of successful development, manufacturing, servicing and marketing of products involving vision technology for quality inspection.

We are closely orientated towards the needs of the market. We are one of the leading providers of vision technologies for quality inspection. Renowned companies place their trust in the solutions and services provided by Optomech.

For us at Optomech, 'Professional After-Sales Service' is not just a simple catch phrase; instead, it is our company philosophy. We accompany you all the way from the initial consultation up to final installation and training - and beyond. You benefit from our many years of experience and will be able to deal with the challenges encountered when implementing the new technology.

Optomech has its own manufacturing facility, spread over 10,000sqft of buildup space, and is supported by a dedicated team of Engineers. At Optomech we always put the customer first, and **Your Quality is Our Vision.**

Do you have any custom inspection requirements? **Contact us today !**

## Our Clients



**ALPLA**



**OPTOMECH**  
Your Quality Our Vision

**OPTOMECH ENGINEERS PVT. LTD.**

#3A, Type II, I.E., Kukatpally, Prashanti Nagar, Hyderabad - 500072.

Tel: +91 40 2307 8371 | Fax: +91 40 2307 7104 | [info@optomech.in](mailto:info@optomech.in) | [www.optomech.in](http://www.optomech.in)