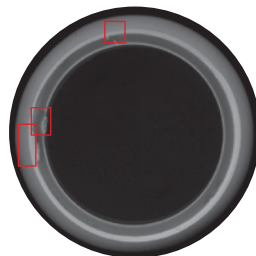




BIS-XL

BOTTLE INSPECTION SYSTEM



Optomech BIS is a high performance system for checking the visual defects in plastic injection blow moulded bottles



During the process of bottle manufacturing a number of defects are generated, due to unavoidable conditions such as temperature variations, raw material defects, contaminations etc.

But customers today are becoming more and more demanding and have zero tolerance for defective products. It is essential for bottle manufacturing companies to inspect 100% of their products.

It is not possible to do so anymore by the traditional methods of manual checking and sorting.

The BIS-XL is a high performance system which does 100% inspection and sorting of bottles for all possible defects automatically and ensures peace of mind for manufacturers as well as their customers.



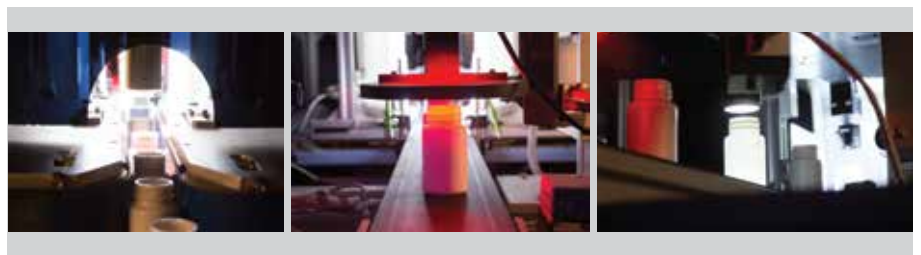
Salient features

- Each bottle is inspected for defects like spots, material inclusions, color smears, color shade variations, flashes, ovality, diameter variations, holes and transparency.
- High speed, machine vision cameras, precision optics and customised lighting coupled with state of the art **21 CFR Part 11 compliant software** provide security, accuracy and repeatability.
- 3 Level access control for 'User', 'Supervisor' and 'Administrator' through separate passwords.
- All the product data is stored in a database and can be retrieved at any time.
- Easy to define tolerances allow the user to decide which bottles need accepted and which need to be rejected.
- The system changes over quickly to inspect new products. Changeover, involves simply selecting the required product from the system library using the touch screen.
- The large monitor displays the image of the bottles as they are passing through the system.
- Periodic reports are generated as per user defined frequency eg. hourly, daily, weekly etc.

Setup



Results



Reporting

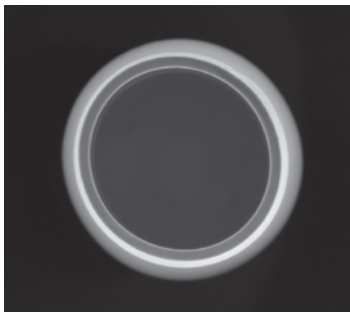
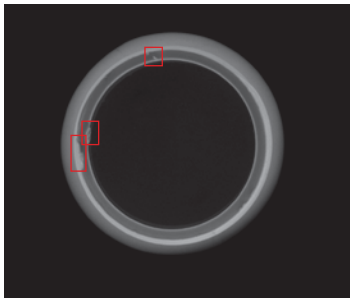
- Reports can be exported to Excel.
- Reports can be exported over the network.
- System can be configured to automatically generate an Excel report at a predefined time, and send over the network.
- The user can at any time select the product and a start and end date. The software will generate reports on the
 - Number of bottles inspected per shift.
 - Number of defective bottles per shift classified as per the defect classes.



Typical Defects

TOP SEALING SURFACE

- Flashes and extra material
- Under/Short molding
- Ovality
- Diameter Variation



OUTER SIDEWALL



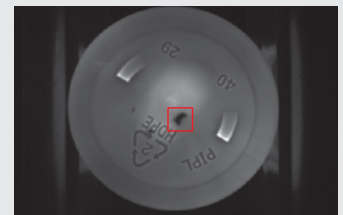
- Bottle shape variation
- Incomplete blowing
- Color Shade Variation
- Black spots

- Burn spots
- Coving
- Short molding
- Extra material

- Ovality
- Holes
- Thin wall

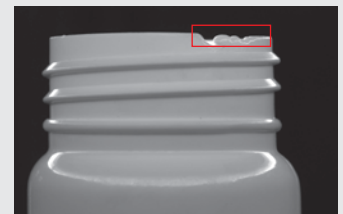
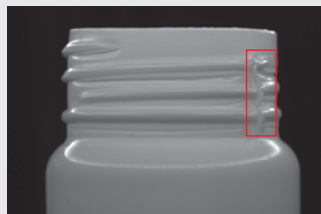
CONTAINER BASE

- Pin Hole
- Incomplete blowing
- Black spots
- Transparency



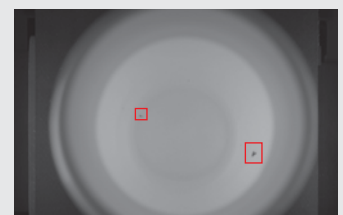
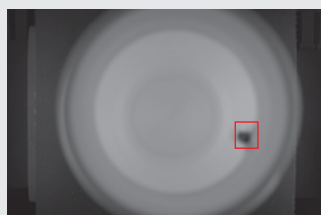
NECK/THREAD AREA

- Thread Damage
- Contamination
- Black spots
- Incomplete blowing



INSIDE THE BOTTLE

- Dark spots
- Material Insert
- Contamination





Optomech has a well equipped optical and mechanical design and fabrication facility at its works at Hyderabad which is ably supported by a team of motivated and trained engineers for installation, commissioning, training and after sales services of its equipments.

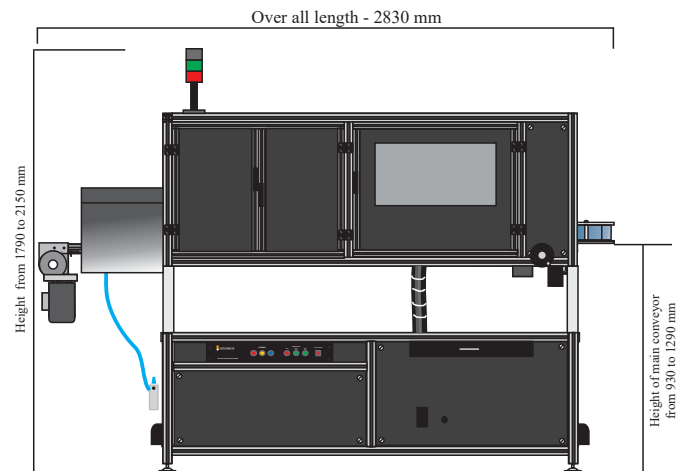
Optomech specializes in the development and manufacturing of quality control equipments based on optical and video imaging technologies.

Optomech Engineers Pvt. Ltd. was founded in Hyderabad, India in the year 1981.

Optomech has over 37 years of experience of successful development, manufacturing, servicing and marketing of products involving vision technology for quality inspection.

We are closely orientated towards the needs of the market. We are one of the leading providers of vision technologies for quality inspection. Renowned companies place their trust in the solutions and services provided by Optomech.

For us at Optomech, 'Professional After-Sales Service' is not just a simple catch phrase; instead, it is our company philosophy. We accompany you all the way from the initial consultation up to final installation and training – and beyond. You will benefit from our many years of experience and will be able to deal with the challenges encountered when implementing the new technology.



Model	Optomech Bottle Inspection System
Speed	11000 bottles per hour maximum
Bottle Size	Height 200, Width 110, Diameter 95 mm maximum
Accuracy	0.1mm for bottle size of 50 mm
Machine Size	Length 2750 mm , Width 1000mm, Height 1800 mm
Conveyor Height / Belt width	930 mm to 1290 mm (Adjustable) / 100 mm
Belt Speed	Upto 300 mm /min
Utilities	Power: AC 415 V, 3 Phase, 5A / Compressed Air: 6-10 bar
Operating Conditions	Temperature : +10° to + 40° C / Humidity : 40% to 90% RH Non Cond

Some of our esteemed customers



OPTOMECH[®]
Your Quality Our Vision

Optomech Engineers Pvt Ltd
3A Type II, I.E., Kukatpally, Hyderabad 500 072, Telengana India
Ph: +91 40 23078371 sales@optomech.in www.optomech.in

We reserve the right to modify the product specifications, in the interest of product development