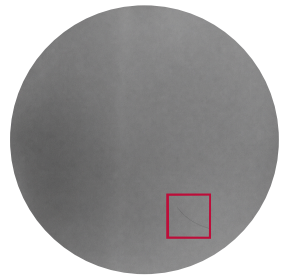
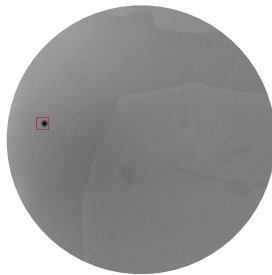
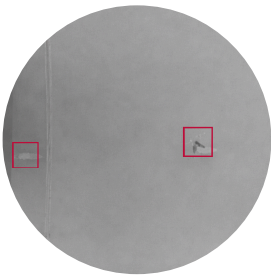
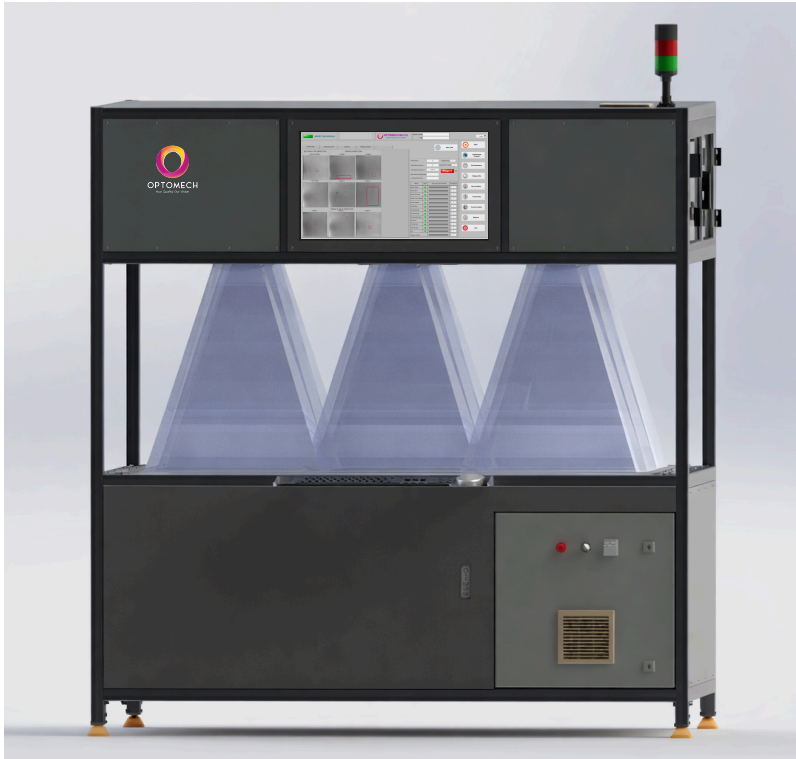




# Polybag Inspection System

**OPTOMECH**  
Your Quality Our Vision



Optomech PBIS is a high-performance inspection system designed to detect visual defects in plastic poly bags used in packaging applications.



During the polybag manufacturing process, defects can occur due to unavoidable factors such as material variation, temperature fluctuations, contamination, sealing inconsistencies, and print-related issues.

To meet these expectations, manufacturers must ensure 100% inspection of every polybag produced. Traditional manual inspection methods are no longer effective or reliable at high production speeds.

The Polybag Inspection System (PBIS) is a high-performance, camera-based solution that automatically performs 100% inspection of polybags for all critical defects, ensuring consistent quality, reduced rejections, and complete confidence for both manufacturers and their customers.



## Hardware

- Data processor and control systems.
- 21" screen user interface
- 9 High resolution cameras and machine vision lenses
- LED Lighting for all the cameras.
- Table for lighting and cameras mounting.
- Uninterrupted power supply for control systems.
- Tower light, Buzzer.

## Reporting

- Shows the picture of the poly bag being inspected on screen.
- The List's the frequency of errors and displays on screen.
- Signals the defect of the rejected Polybag.
- Operator can set the tolerances for each defect.
- Operator can save the parameters of each Polybag in a database and retrieve the same Later.
- All measurement reports are stored in the database, to be recalled anytime.
- Reports can be exported to excel.

## Salient Features

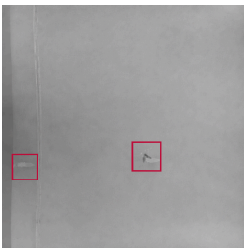
- **AI-powered, high-precision inspection** with deep-learning algorithms for reliable defect detection and minimal false rejects
- **Intuitive, operator-friendly GUI** with real-time dashboards, analytics, and 21 CFR Part 11 compliance
- **Fast product changeover** with easy teach-in and recipe-based parameter management
- **Remote support** and diagnostics for faster troubleshooting and reduced downtime
- **Comprehensive defect history**, image capture, reporting, and full traceability
- **Multi-level user access control** with password protection and secure operation
- **Real-time visual feedback** on a 21" monitor with live inspection and defect trends
- **Commissioned and fine-tuned performance** to match customer quality benchmarks

# Specifications & Typical Defects

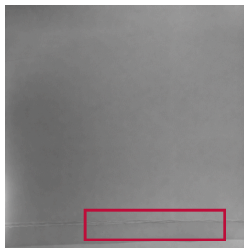
## Specifications

Model	Polybag Inspection System
Speed	Up to max 3,000 polybags per hour
Polybag Size	Length: 1270 mm,width: 1016 mm
Defects Detected	Black Spots above 0.4mm, white Spots above 0.6mm
Machine Size	Length: 1480 mm, Width:1230 mm, Height:2119mm, Weight: 70 Kg
Cameras	9 High resolution vision cameras with vision leans. 9 no's cameras from TOP.
Defect Indication	Tower Light and Buzzer sound will be provided. On Screen Defects overlay and Onscreen defect indicator will be provided.
Utilities	Electric: Voltage and Current: Ac 240 v 1 phase, 5A. High speed internet for via LAN for remote support.
Operating Conditions	Temperature: +10°C to +40°C Humidity : 40% -90% RH, non-condensing. Maximum operating altitude: 1900 m

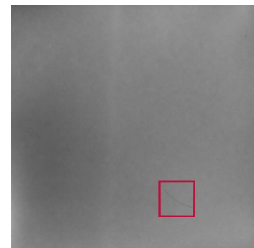
## Typical Defects



1. Holes



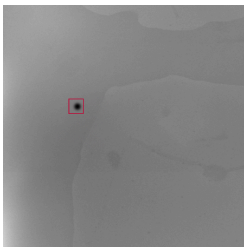
2. Seal Spread



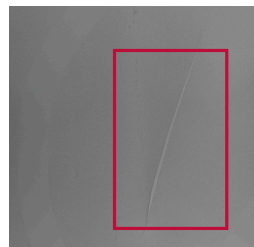
3. Particle



4. Spot



5. Black Spot



6. Cuts



Optomech has a well equipped optical and mechanical design and fabrication facility at its works at Hyderabad which is ably supported by a team of motivated and trained engineers for installation, commissioning, training and after sales services of its equipments.

Optomech specializes in the development and manufacturing of quality control equipments based on optical and video imaging technologies.

Optomech Engineers Pvt. Ltd. was founded in Hyderabad, India in the year 1981.

Optomech has over 37 years of experience of manufacturing, servicing and marketing of products involving vision technology for quality inspection.

We are closely orientated towards the needs of the market. We are one of the leading providers of vision technologies for quality inspection. Renowned companies place their trust in the solutions and services provided by Optomech.

For us at Optomech, 'Professional After-Sales Service' is not just a simple catch phrase; it is our company philosophy.

We accompany you all the way from the initial consultation up to final installation and training – and beyond. You will benefit from our many years of experience and will be able to deal with the challenges encountered when implementing the new technology.



Some of our esteemed customers:



Some of the other optical metrology products manufactured by optomech are...



**OPTOMECH**<sup>®</sup>  
Your Quality Our Vision

Optomech Engineers Pvt Ltd 3A Type II, I.E., Kukatpally,  
Hyderabad 500 072, Telangana India Ph: +91 40 23078371  
sales@optomech.in www.optomech.in

*We reserve the right to modify the product specifications, in the interest of product development*